



NUANCE

The experience speaks for itself™

DATASHEET

Nuance SafeCom Rule Based Printing

Why apply rules to company printing?

Today printers and MFPs with color capabilities are available in most companies, but management is lacking efficient means to ensure that only relevant material is produced in color (which can be up to 8 times more expensive than b/w). Management may also want additional cost savings for b/w prints by forcing duplex printing and toner save where relevant.

SafeCom Rule Based Printing (RBP) allows print cost savings by offering management a method of enforcing policies for printing.

DECIDING ON COMPANY PRINT POLICIES

An important aspect of the policies is: Who should be subject to the different policies? Users dealing with marketing and business communication are normally allowed to print in color to increase recognition and readership, whereas others may not be allowed to print in color at all, and others again can print in color, but whenever they do so, they are made aware of the extra cost by a popup message or e-mail.

CHARACTERISTICS

- Easy administration as rules can be applied to groups of users.
- Server-based implementation for best performance.
- Integrated rule editor.
- Separate Rule Based Print engine allows easy update.
- Supports PCL5, PCL5c, PCL5e, PCL6 or PostScript level 2 or 3.
- Builds on and supplements existing and proven SafeCom technology.

AREAS OF APPLICATION

- Any company or organization that wishes to enforce cost saving printing practices.
- Any company or organization that wants to ensure that only relevant material is printed on their color printers and MFPs.



How does it work?

The policies are formulated as one or more rules. Rules are assigned to groups of users. It is possible to construct rules like:

- Only color jobs can be Pull printed on color devices.
- Print e-mail as b/w and with toner save.
- Color print not allowed.
- Allow color print, but inform about cost.
- A rule is composed of three parts: 1) Condition, 2) Action, and 3) Notification.

This is best demonstrated with two examples.

Example 1: Color printing

- The condition is that color printing is not allowed.
- The action is to delete the job.
- The user is notified so he knows not to print in color in the future.

Example 2: E-mails

- The condition says the job name (document title) must contain eg. "Microsoft Outlook".
- The action is to modify the job by forcing it to b/w, enable toner save, and force double-sided printing.
- In this example there is no notification to the user.

Rules can be applied to groups of users. Existing user grouping can be imported from Windows and used in connection with SafeCom Rule Based Printing.

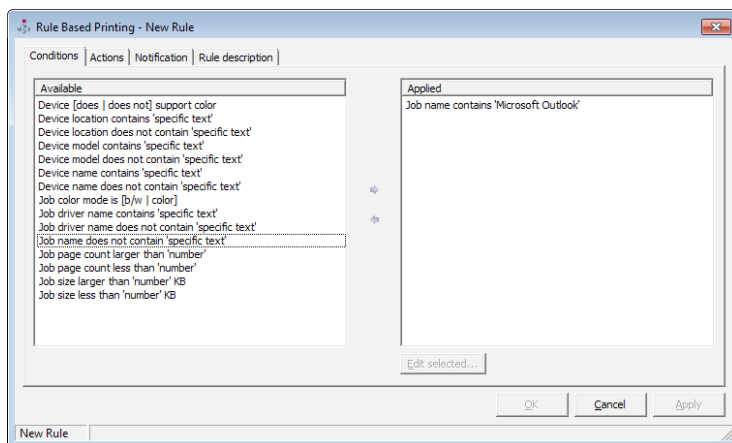
DISCLAIMER

SafeCom Rule Based Printing needs to modify the print data stream to control: Duplex on/off, Toner save on/off, and Force job to b/w. SafeCom does NOT guarantee that these modifications work and cannot be held responsible if they do not work as expected.

For more information visit safecom.eu

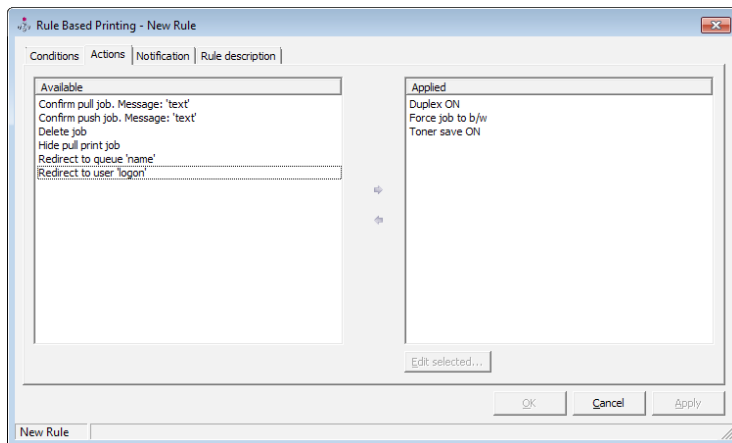
SETTING UP THE RULES IN THE SAFECOM ADMINISTRATOR

On the Conditions tab double-click a condition to apply the condition or conditions. Multiple conditions can be applied to one rule.



SETTING UP THE ACTIONS

On the Actions tab double-click an action to it to the rule. Multiple actions can be applied to one rule.



SELECT THE NOTIFICATION

On the Notification tab check the notification method you want to use and enter the notification message. It is possible to refrain from selecting any of the notification methods to have the rule execute behind the scenes (silently).

